

THE  
CHESHIRE AND  
WARRINGTON  
PLEDGE

Putting employers at  
the heart of inspiring  
the next generation of  
employees...



European Union  
European  
Social Fund

Cheshire &  
Warrington  
CAREERS HUB

THE CAREERS &  
ENTERPRISE  
COMPANY

...helping every young  
person find their best  
next step

# Today's event:

- 9.00- 10.00: Keynote presentations
- 10.00- 10.45: Interactive Careers Leadership workshop
- 11.00- 11.45: Focused workshop sessions: Parental engagement research, Local skills priorities and LMI, Promoting technical & vocational pathways
- 11.45- 12.30: Industry innovation visits hosted by local employers and apprentices
- 12.30- 13.15: Lunch & networking
- 13.15- 15.00: Sharing practice sessions
- 15.00- 15.30: Reflections, closing comments & evaluation



Science and  
Technology  
Facilities Council

# Welcome to Sci-Tech Daresbury

**Dr Katharine Robertson**

STFC Head of Campus Development @Daresbury



Science and  
Technology  
Facilities Council

# Housekeeping

## Daresbury Laboratory is a working laboratory – there are hazards

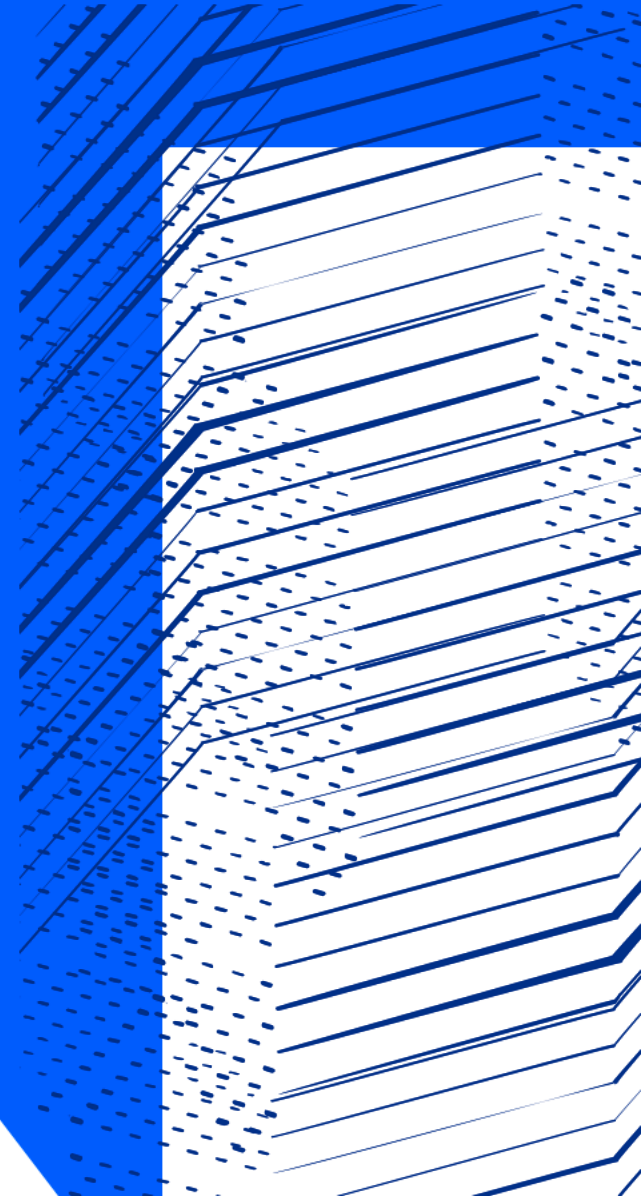


- Fire alarm testing will take place this morning
  - Announcement will be made when testing is complete
  - If there is a real fire alarm, leave the building via the nearest exit and assemble at the muster point
- WCs – to the right outside Lecture Theatre
- Stay with your group at all times with your STFC guides
- If you feel unwell at any time, please tell a member of STFC staff
- There are vehicles onsite - please stick to pavements and use crossings
- Look for signage around site including – ‘**no access to the public**’ signs
- Tap Water gets very hot – please be careful when washing hands
- In case of emergency call **01925 60 3333**



Science and  
Technology  
Facilities Council

# Welcome to Sci-Tech Daresbury



In 1962, STFC's Daresbury  
Laboratory began its  
scientific journey





# UKRI-STFC

## Mission:

- Deliver world-leading national and international research and innovation capabilities
- Discover the secrets of the Universe

## How?

- **Frontier Research** – particle physics, astronomy, nuclear physics, space science
- **Facilities access** – UK and overseas
- **Innovation** - Collaborative Development
- **Ecosystem** – National Science and Innovation Campuses

**Daresbury Laboratory**  
Sci-Tech Daresbury Campus



**UK Astronomy Technology Centre, Edinburgh**



**Rutherford Appleton Laboratory**  
Harwell, Oxfordshire



# Impact



JWST MIRI  
unveiling secrets  
of the distant  
universe



Using neutrons to  
reveal economic  
chaos during the  
'Year of the Four  
Emperors' AD  
68/69



Transforming the  
way menopause is  
diagnosed,  
monitored and  
managed, paving  
the way for  
individualised  
treatment plans



Developing an  
ultra-high-speed  
camera to enable  
new insights into  
specific  
mechanisms of the  
physical and life  
sciences

# Skills

## A wide range of technical, management and business competencies to support research & industrial innovation

- All types of engineering - Mechanical, Optical, Thermal, Electrical
- Software and computation, digital technologies & infrastructure
- Project management
- Estates, Health & Safety
- Business development
- Marketing & events
- Communications & Public Engagement
- Finance & HR
- .....



Image © STFC RAL Space - BuiltVision





Discover  
what's  
possible

Careers at STFC

# Early Careers opportunities

- Work experience placements (years 10, 11, 12, 13)
- Apprenticeships
- Year in industry placements
- Graduate scheme

**+ Extensive public engagement programme – from primary age upwards, targeting underserved communities**

# Sci-Tech Daresbury Campus



- Over 150 high-tech companies, ~2,000 high value jobs
- IBM, Hitachi, Atos & Croda
- ~20% international companies
- **Sector focus:**
  - Digital
  - Advanced Engineering & Materials
  - Biomedical/Healthcare

- Sales growth – 25-30% pa
- 5% company failure rate
- 80% companies collaborate on campus





# Masterplan





Science and  
Technology  
Facilities Council

# Thank you

**Facebook:** Science and  
Technology Facilities Council

**Twitter:** @STFC\_matters

**YouTube:** Science and  
Technology Facilities Council



# Careers Education – the national picture

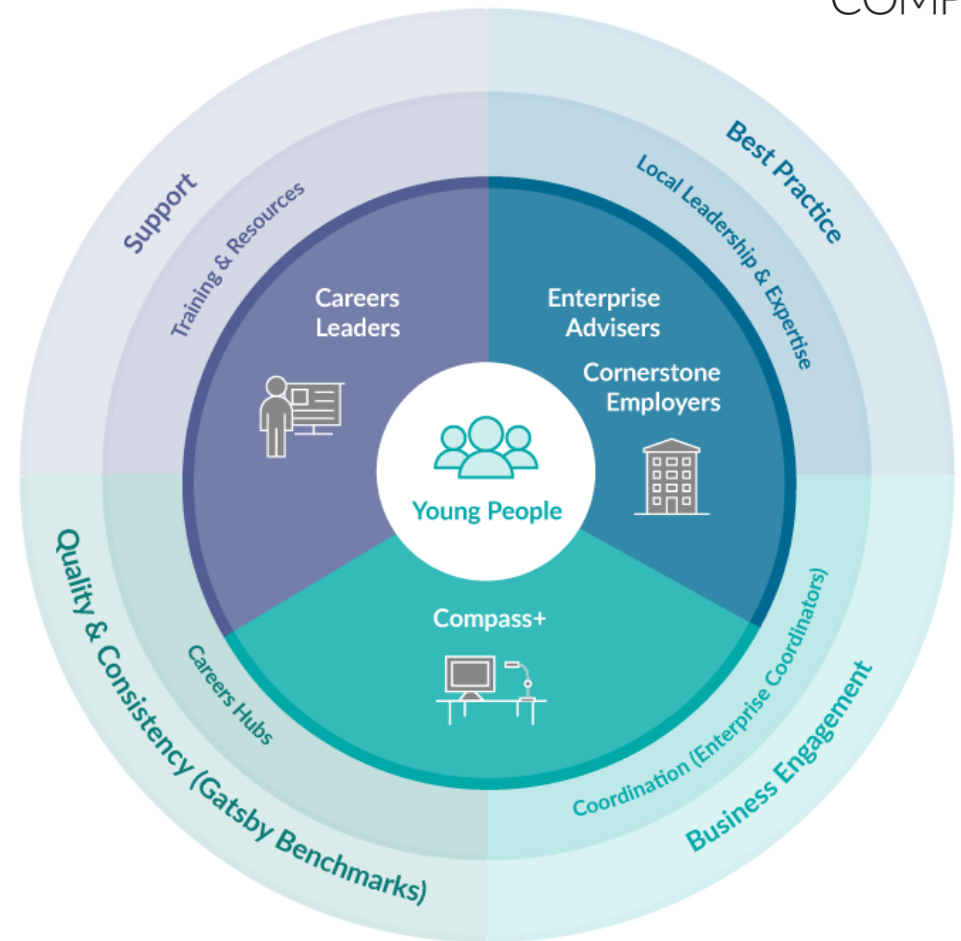
## Nicola Hall

Director of Education, The Careers  
& Enterprise Company



# Excellence everywhere, for everyone

1. A powerful **Careers Leader** in every school and college that can meet individual needs.
2. A school or college where there is **strategic engagement with business** (through Enterprise Advisers and Cornerstone Employers).
3. A **local area where activity is co-ordinated to share expertise** (facilitated by Careers Hubs of best practice).
4. A national body to secure **higher standards, consistency and promote what works**.



The Careers & Enterprise Company's Model

# The national policy context

1. **Careers Impact Review System** - Quality of provision linked to school/college improvement
2. **Ofsted Thematic Review**, visits commencing February 2023 and summer term for SEND/AP/PRU settings
3. **Provider Access Legislation** enacted 5th January 2023; statutory requirement
4. **Careers Leader training** extended; Teacher Encounters
5. **Future Skills Questionnaire** - Young people's perceptions collected at scale;
6. **Employer Standards pilot** - A renewed emphasis on employers —

# Local progress & priorities

- **True or false-** Cheshire and Warrington schools/colleges made the biggest Gatsby Benchmark progress nationally over the 2022 summer term
- What % of Cheshire and Warrington schools/colleges were achieving Gatsby Benchmark 1 (Stable Careers Programme) by the end of Term 1? **39% or 60%**
- Approximately how many young people shared their views via the Future Skills Questionnaire over the 2021-22 academic year? **2000 or 4000**



# Local progress & priorities

- In a local survey of 164 parents what % said they knew little or nothing about their child's future career and education options? **More or less than 40%**
- **True or False:** The Cheshire and Warrington gap in attainment and destination data between those eligible for free school meals and those not is bigger than the English average at KS4 and KS5

# Local progress & priorities

- The better a school does against the Gatsby Benchmarks, the more likely a young person is to be in a sustained destination, especially for those serving disadvantaged communities.  
**Tackling our local disadvantage gaps is a priority**
- Local progress is strong and building momentum but we need to **strengthen alignment with school improvement priorities and empower a whole school approach**
- More employers are having meaningful engagement with young people. **We want to also increase employer engagement with teachers to support staff cpd and curriculum design**
- Student and parent voice is an important part of evaluating the impact of careers education. **We must use it to ensure we are meeting the needs of every young person**



**SIR THOMAS  
BOTELER**

CHURCH OF ENGLAND HIGH SCHOOL

THROUGH GOD, WE CARE

HIGH EXPECTATIONS  
HIGH ASPIRATIONS  
HIGH STANDARDS  
YOU WILL SUCCEED

[WWW.BOTELER.ORG.UK](http://WWW.BOTELER.ORG.UK)

WE ARE PART OF

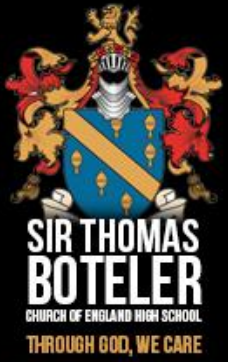


THE  
CHALLENGE  
ACADEMY  
TRUST

Mrs Beverley  
Scott -Herron  
Headteacher

Mrs Anna Mawby  
Assistant Headteacher





# IMPACT

- NEET: 7.9% - 0%
- Level 3 courses: 33% - 69%
- University: 55% - 78%

HIGH EXPECTATIONS  
HIGH ASPIRATIONS  
HIGH STANDARDS  
YOU WILL SUCCEED

[WWW.BOTELER.ORG.UK](http://WWW.BOTELER.ORG.UK)

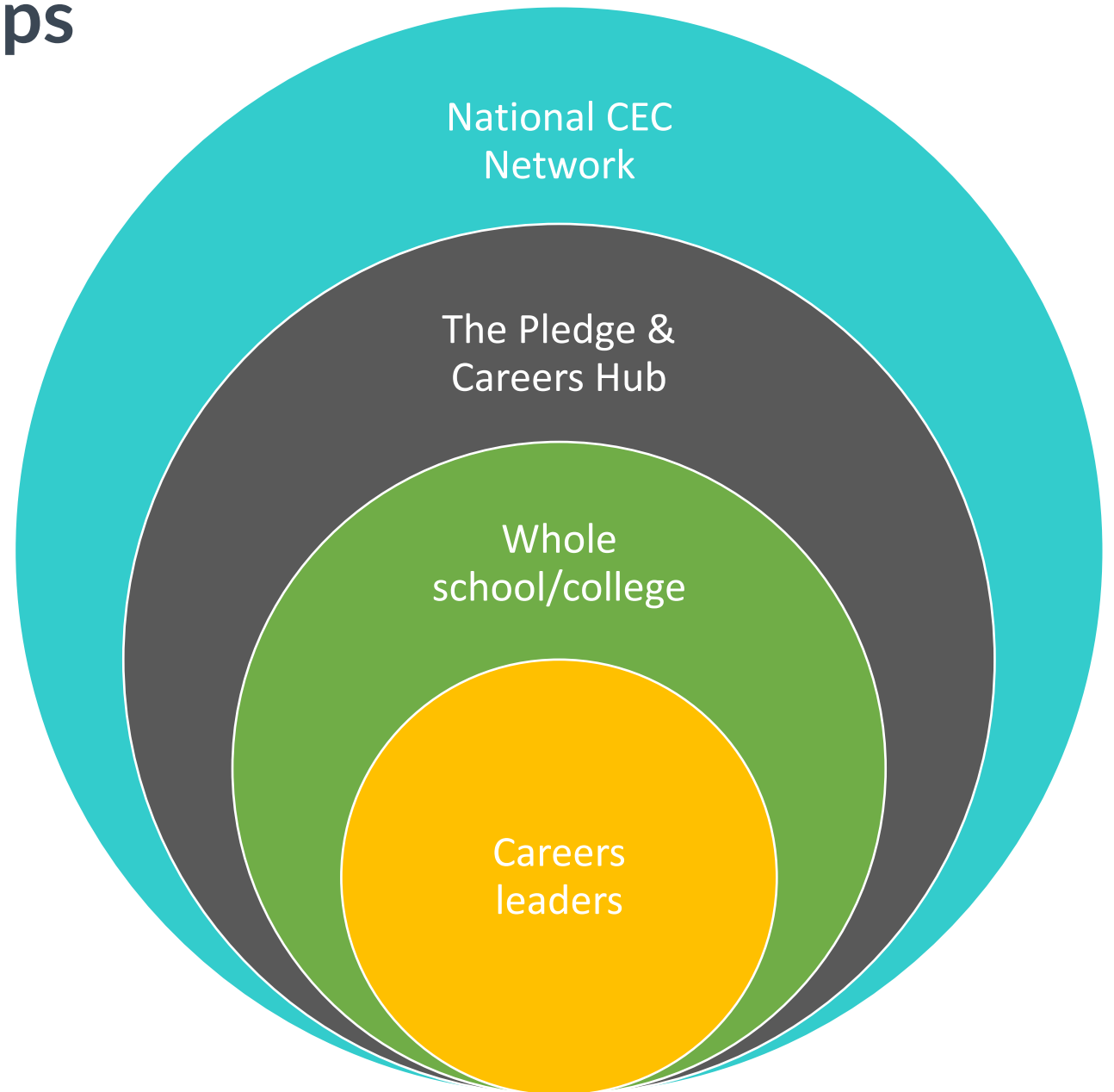
WE ARE PART OF  
 **TCAT**  
THE CHALLENGE  
ACADEMY  
TRUST



# The Power of our Partnerships

Today we want you to:

- ✓ Connect
- ✓ Celebrate
- ✓ **Collaborate**



# Social Media

Please tag us in any of the following social media platforms.

## Linked IN

<https://www.linkedin.com/company/the-cheshire-warrington-pledge>

## TWITTER

@ThePledgeCW @DaresburyLab

## FACEBOOK

Facebook.com/TheCW Pledge

#FutureReady #careersleaders #SciTechDaresbury